

PIANO PARTICOLAREGGIATO N° 1

RIMODULAZIONE DEL PROGETTO CON ADEGIAMENTO ALLE INDICAZIONI DELLA R. A. BB. AA. A SEGUITO DEL N. O. N° 313 DEL 28/05/95 E DELLA DELIBERA DI G. M. N° 840 DEL 21 AGO. '95.

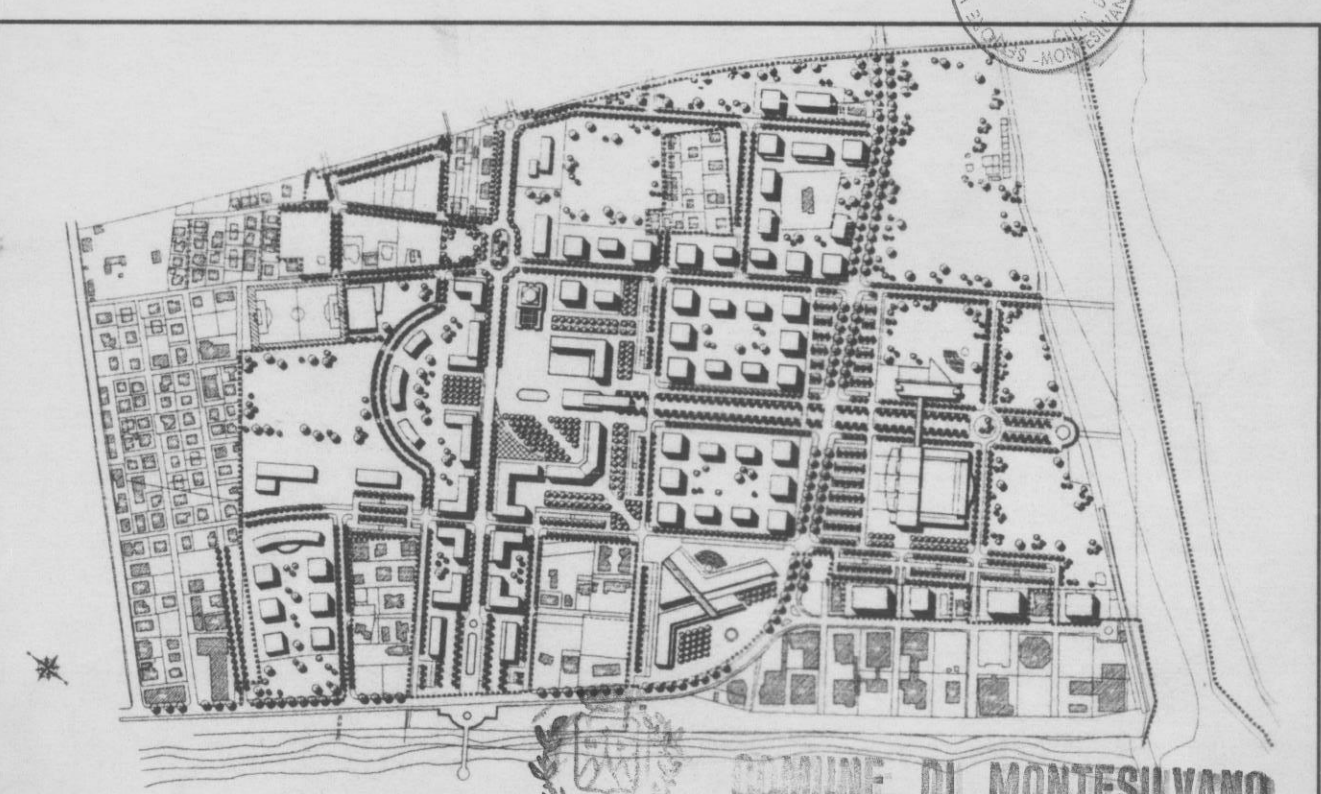
TAV. 6

SCALA 1:200 - II DICEMBRE 1995

TIPOLOGIE COMPARTO I

ARCH. RONALDO CANALE

UFFICIO TECNICO COMUNALE

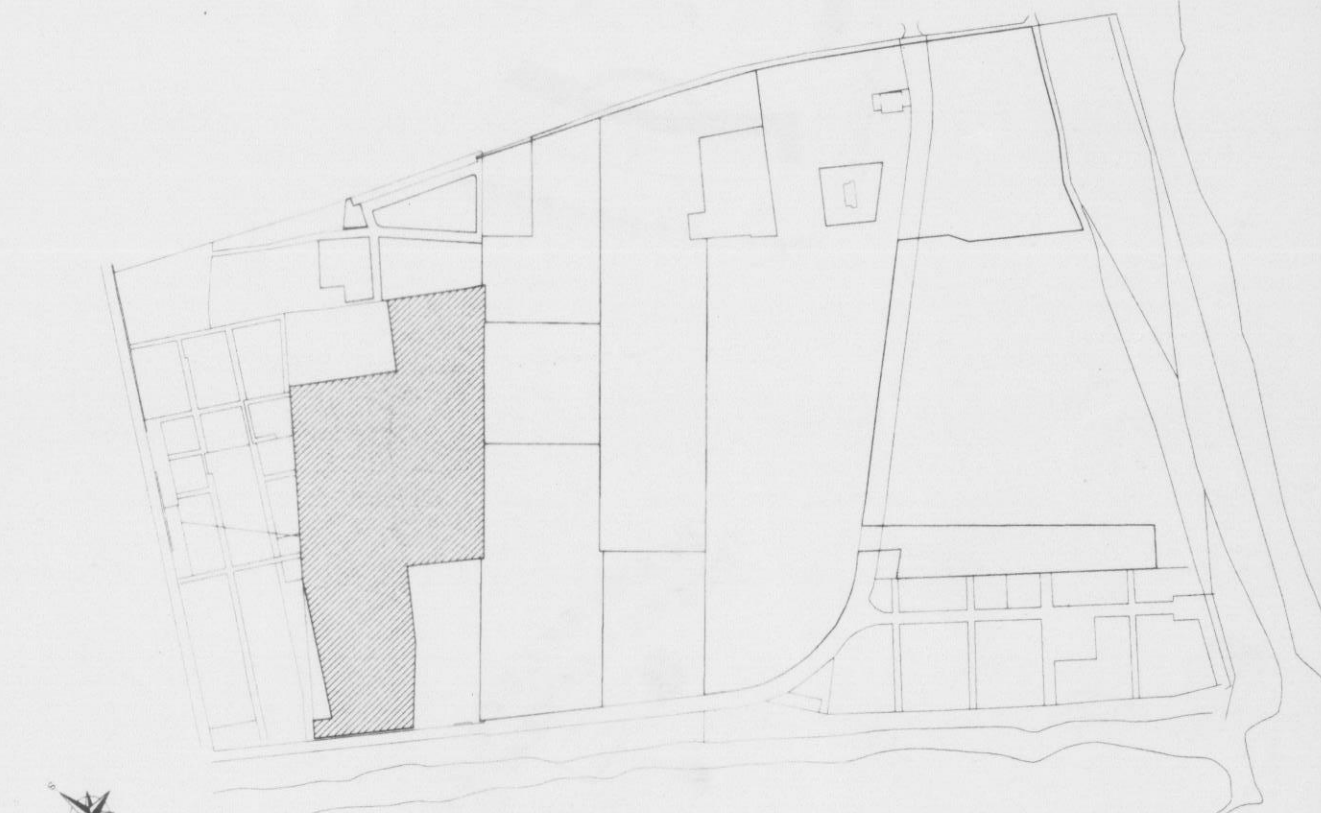
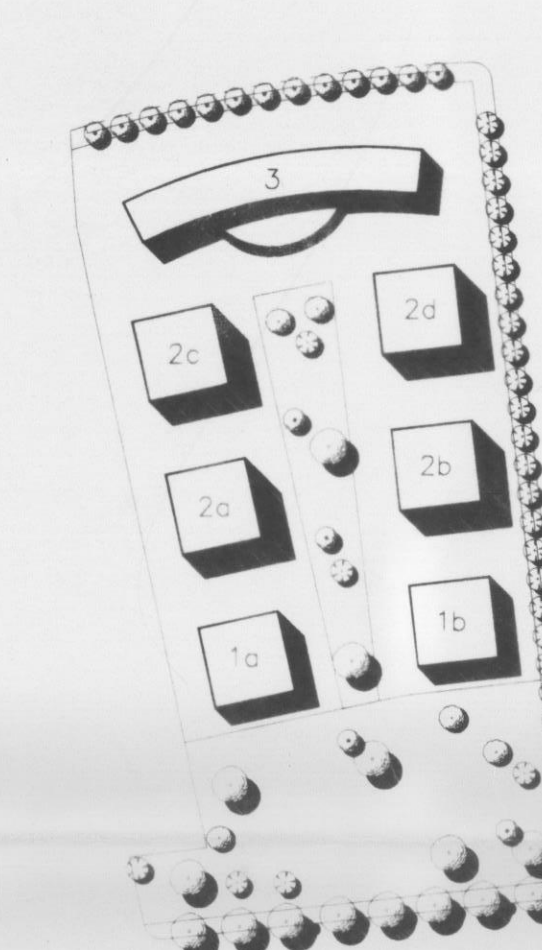
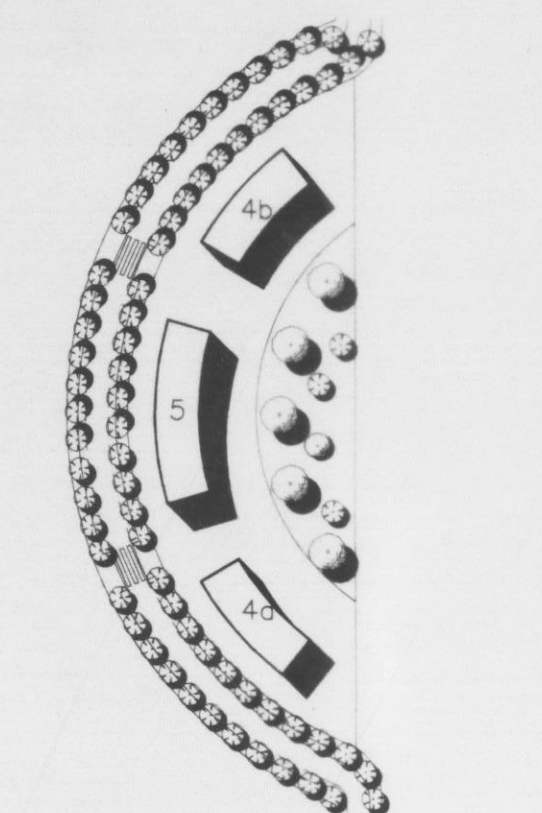


COMUNE DI MONTESILVANO

PROGETTO ESAMINATO DALLA  
COMMISSIONE COMUNALE DI ABILITAZIONE  
SEDUTA DEL 20 APR. 1996

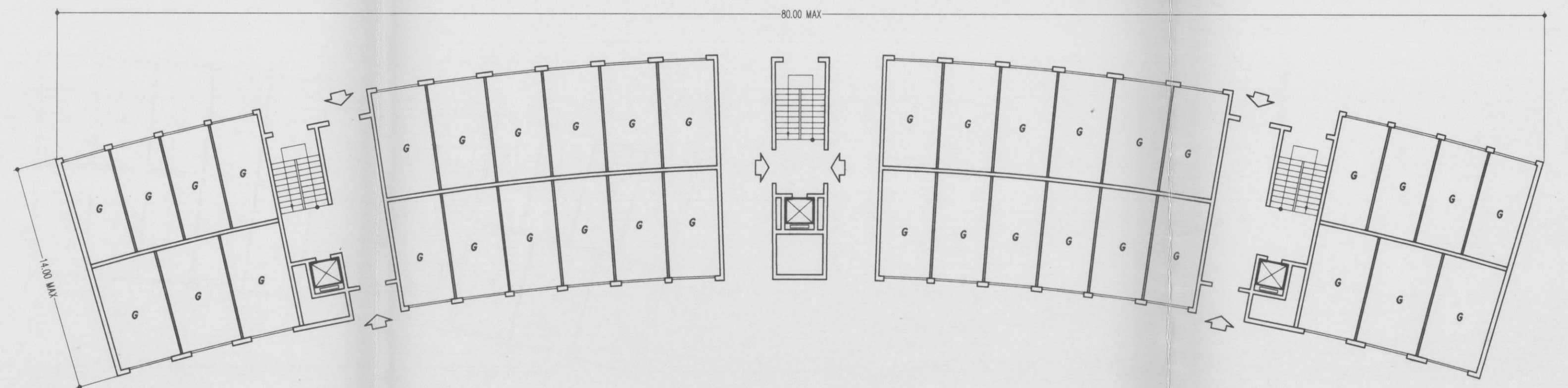
EDILIZIA N° 101  
**FAVOREVOLE**  
CON PRESCRIZIONE

UN COMPONENTE  
UN COMPONENTE

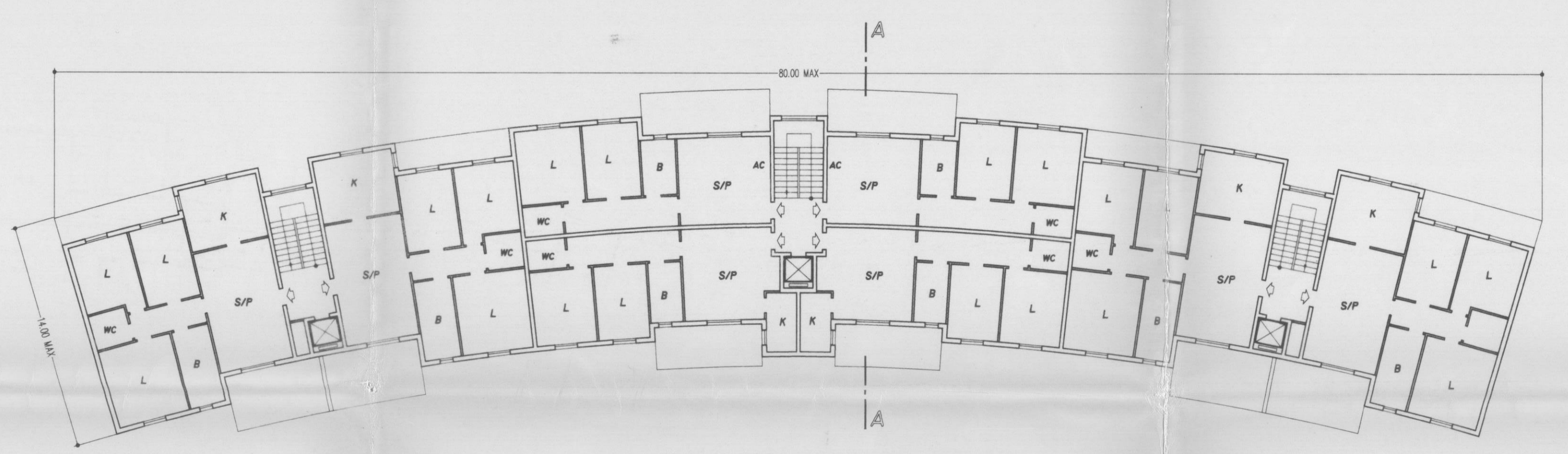


TIPO EDILIZIO 3

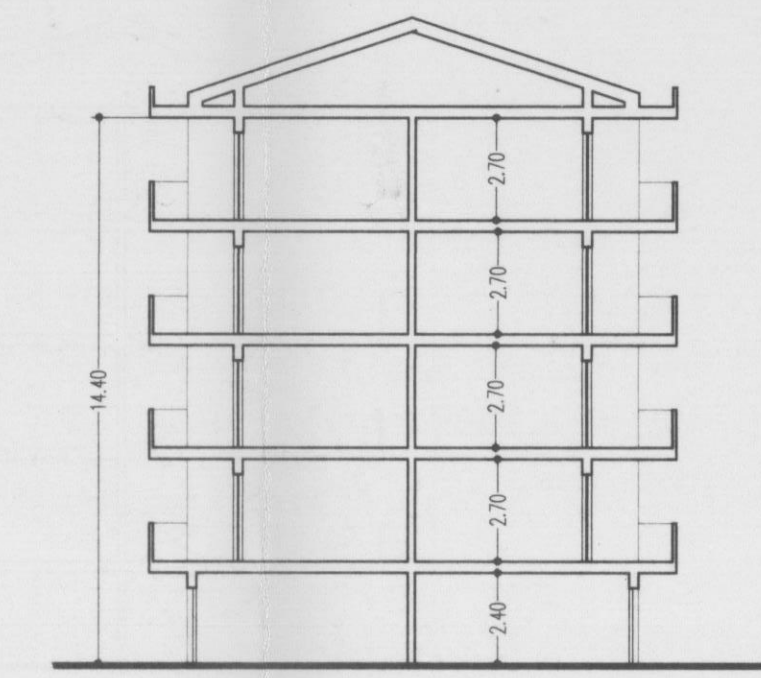
(SCALA 1:200)



PIANO TERRA



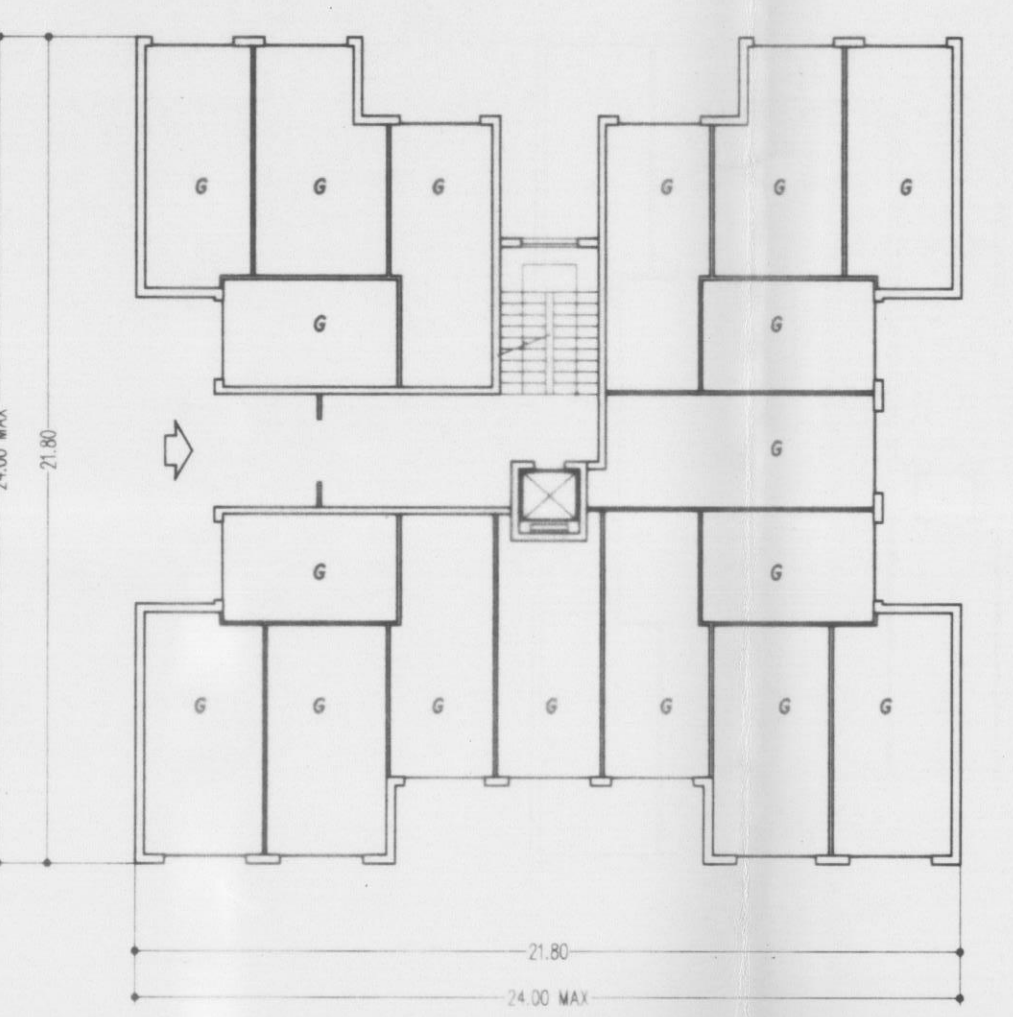
PIANO 1-2-3-4



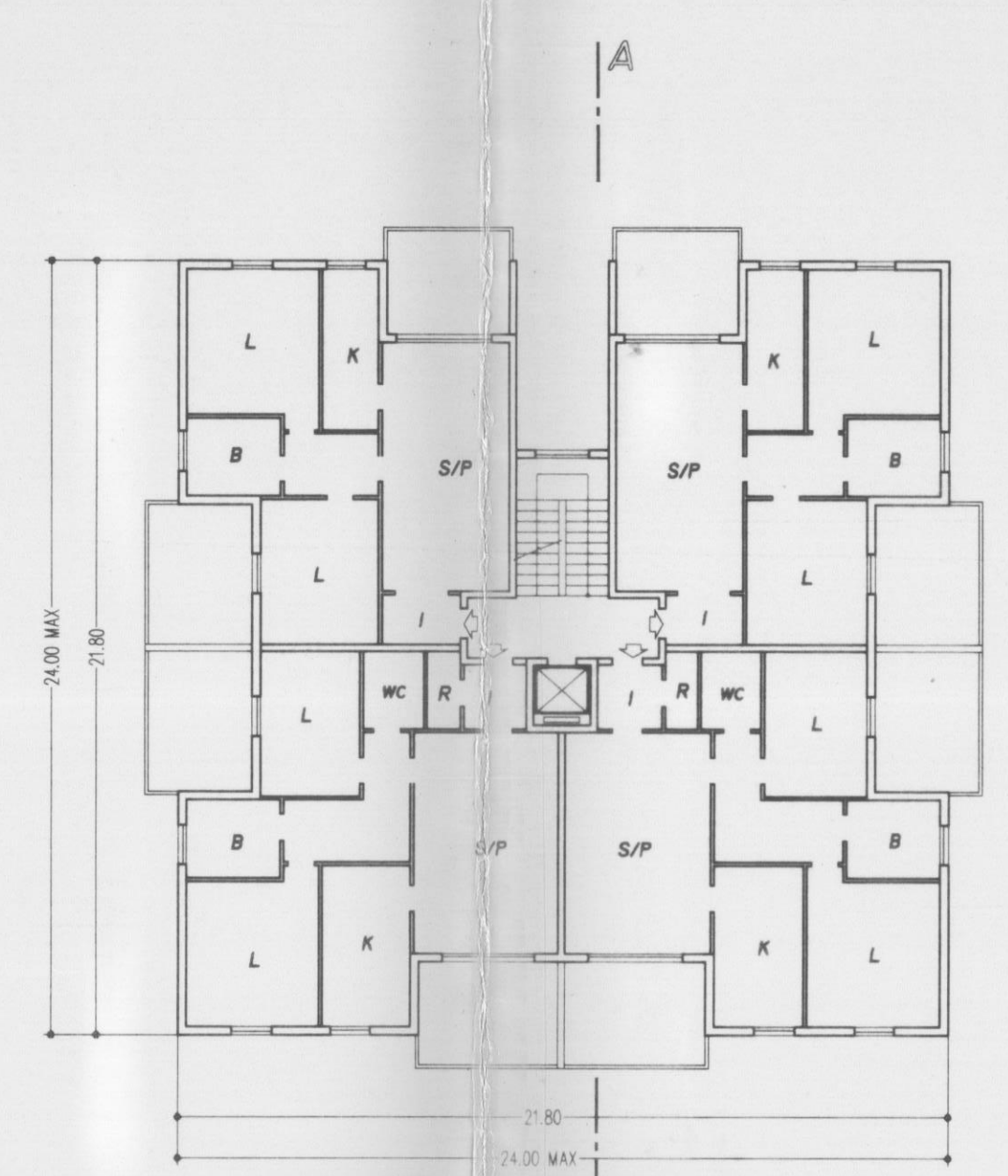
SEZIONE A-A

TIPO EDILIZIO 2A-2B-2C-2D

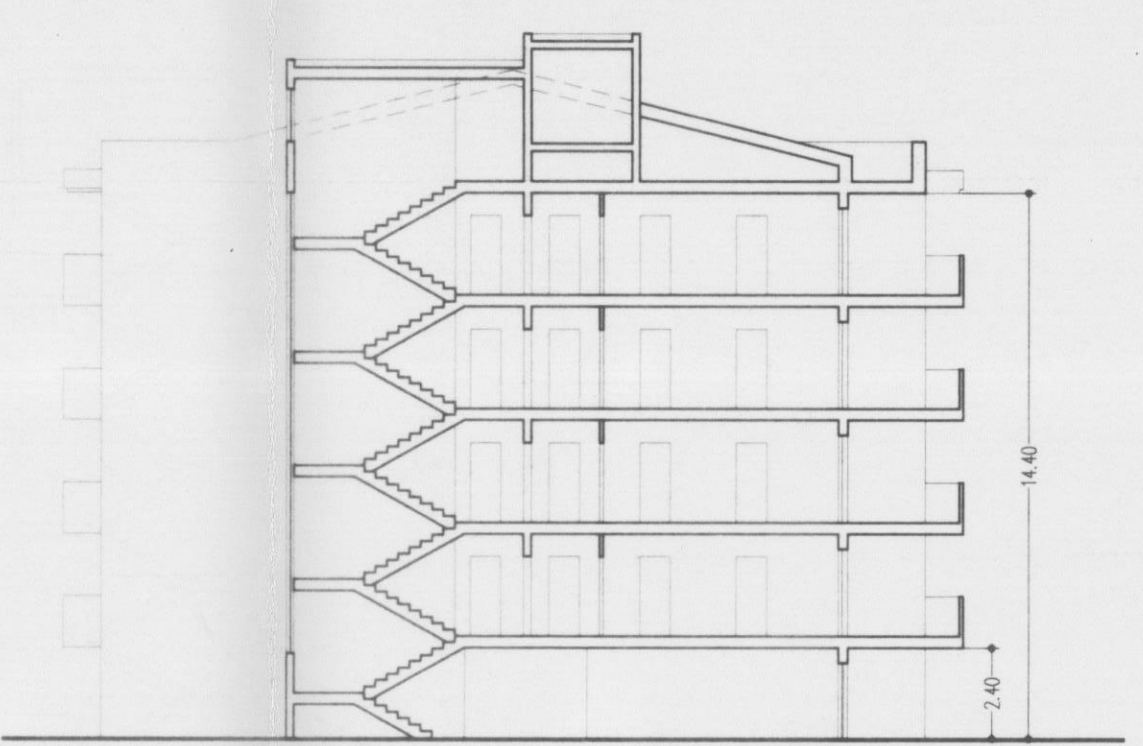
(SCALA 1:200)



PIANO TERRA



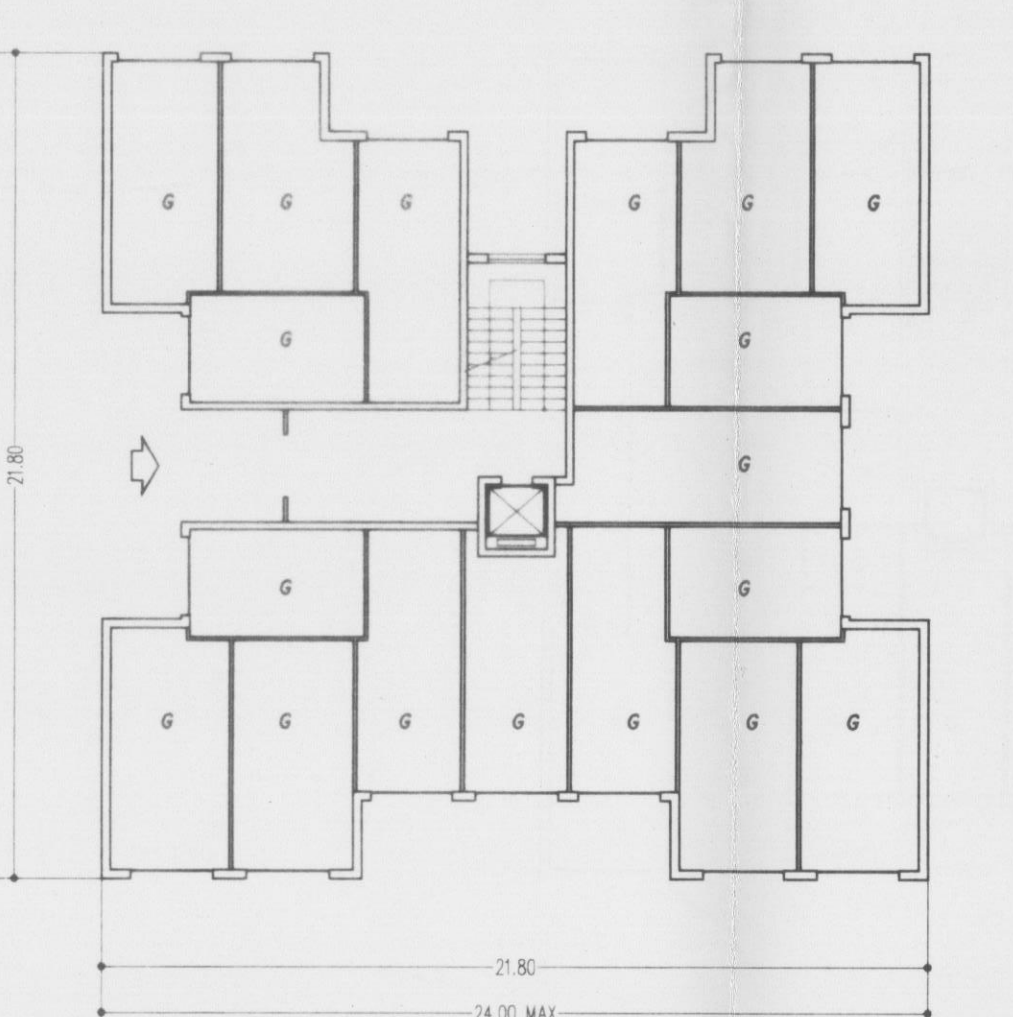
PIANO 1-2-3-4



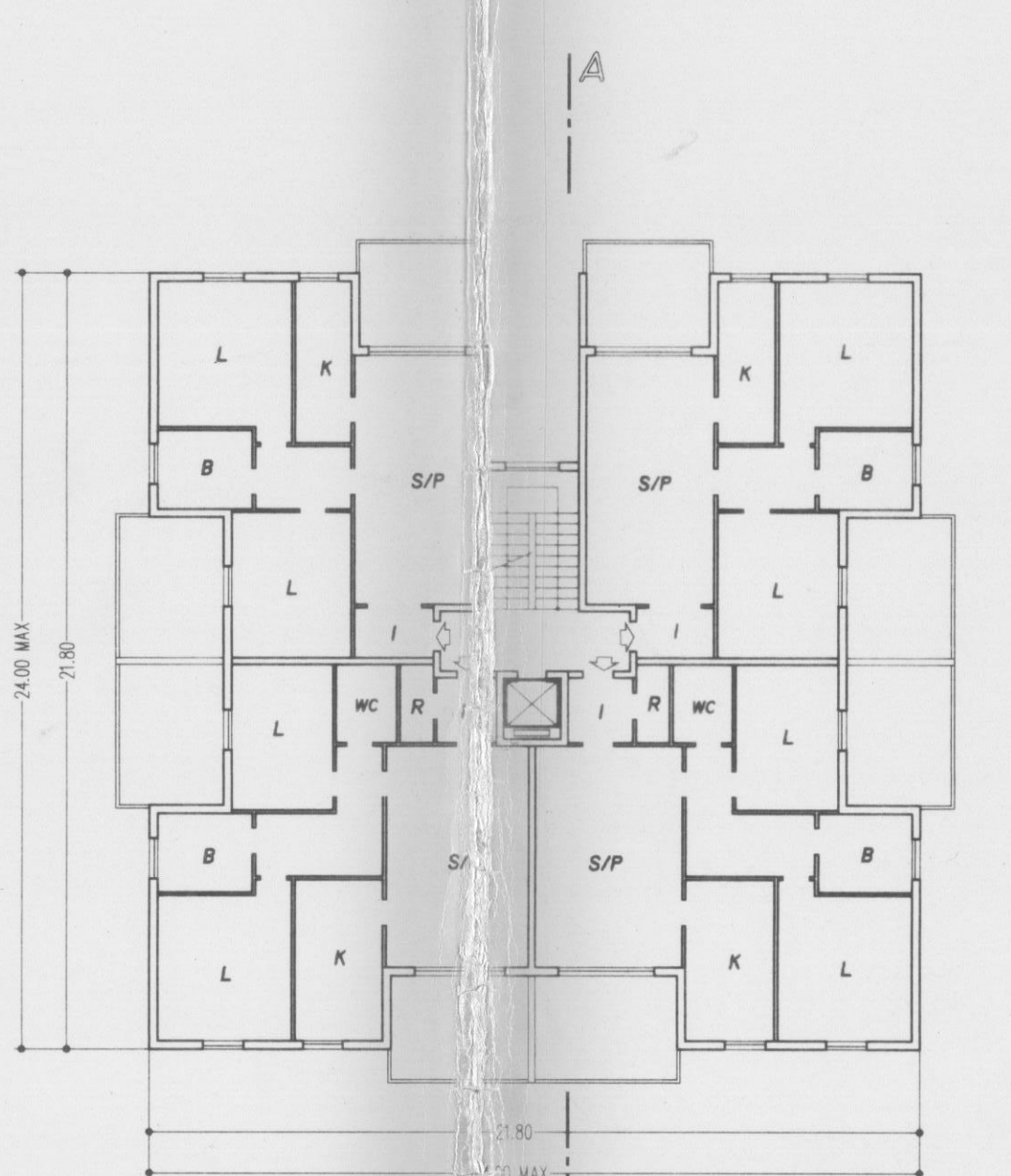
SEZIONE A-A

TIPO EDILIZIO 1A-1B

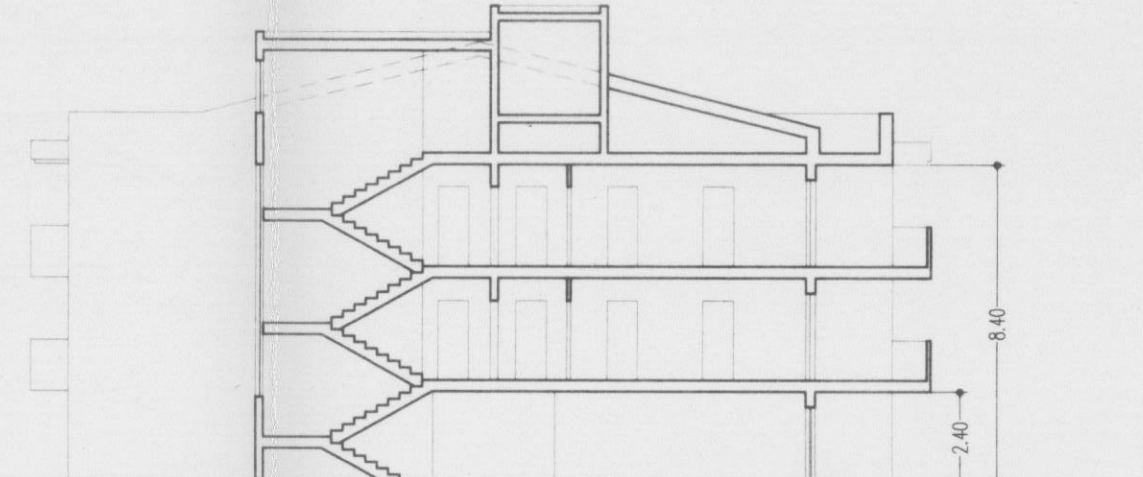
(SCALA 1:200)



PIANO TERRA



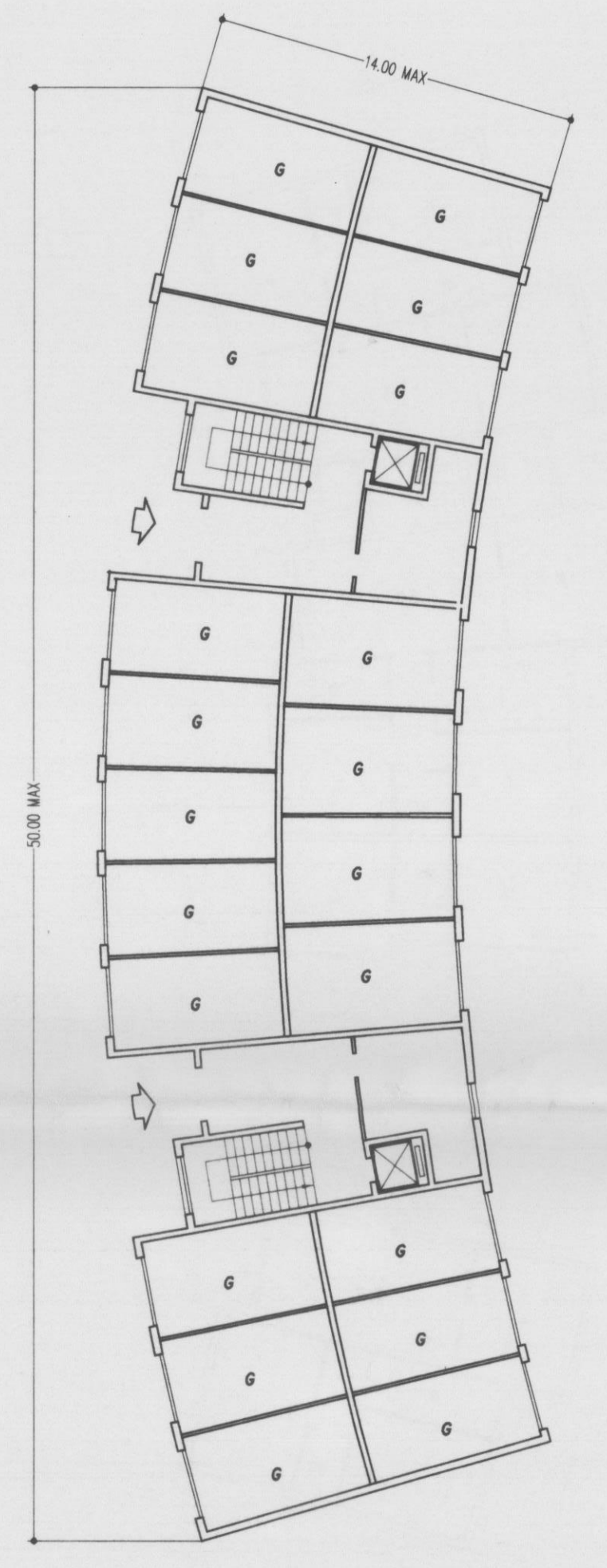
PIANO 1-2



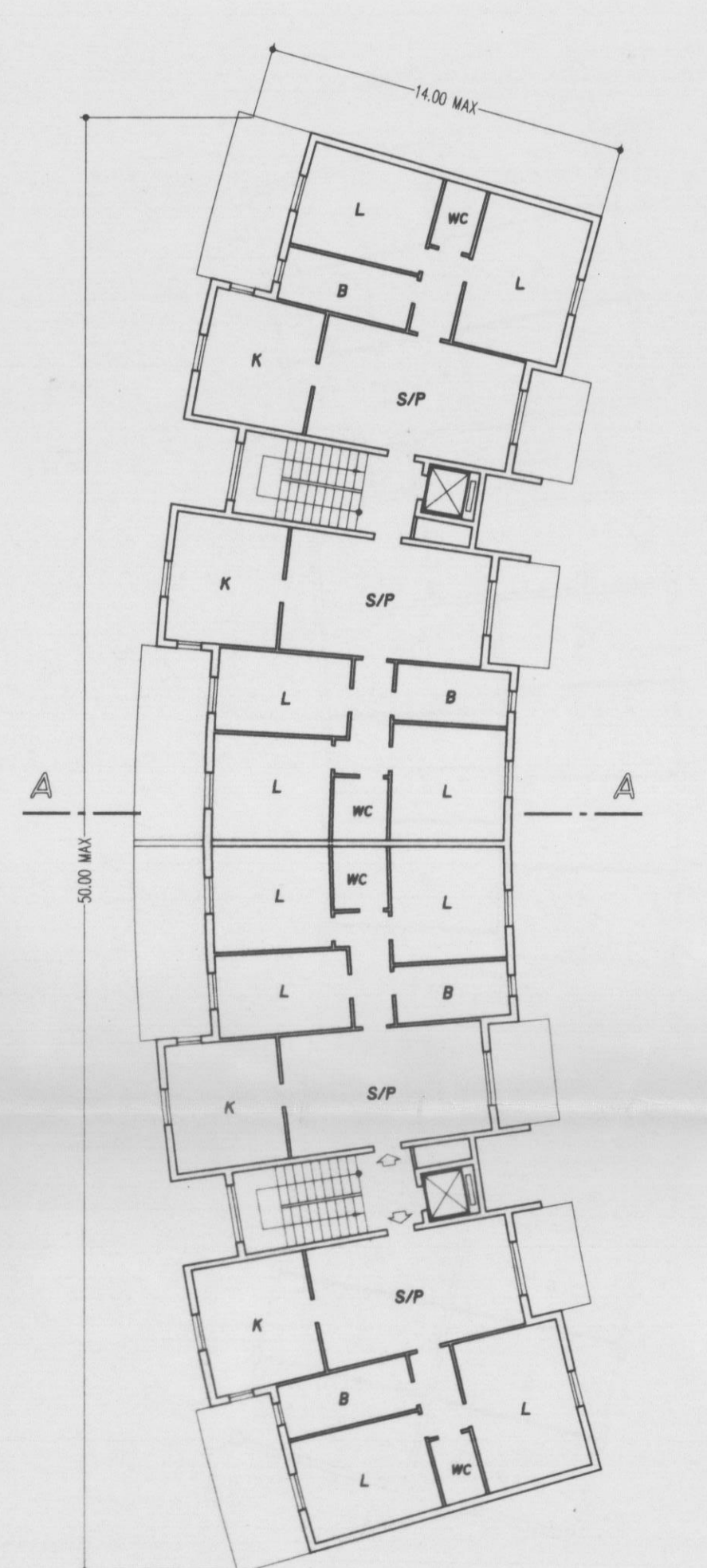
SEZIONE A-A

TIPO EDILIZIO 5

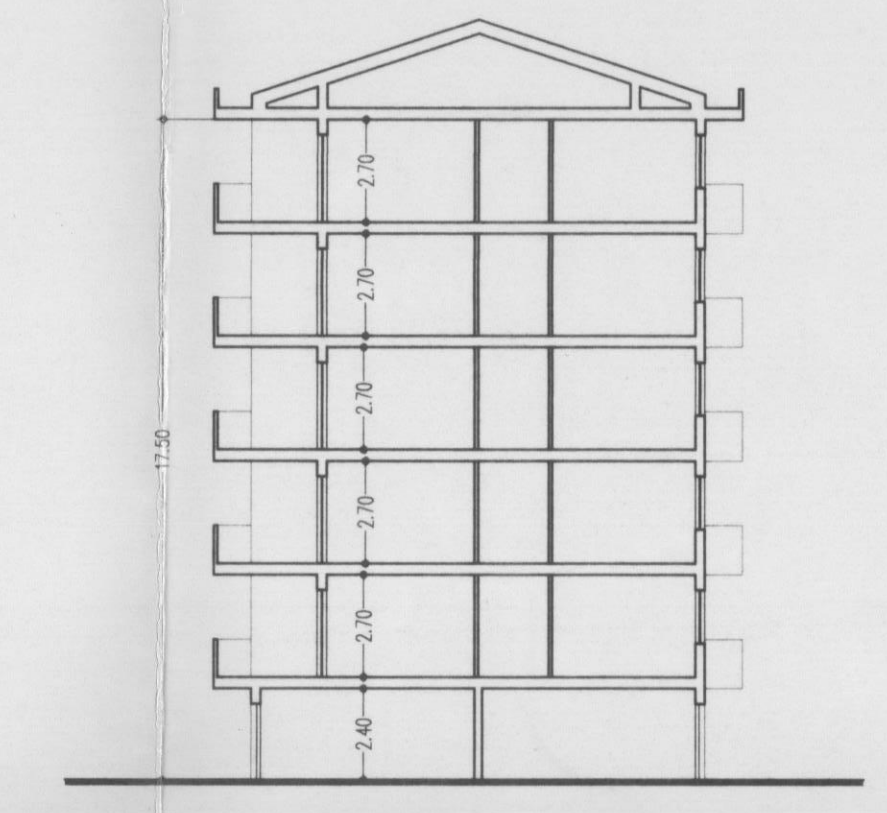
(SCALA 1:200)



PIANO TERRA



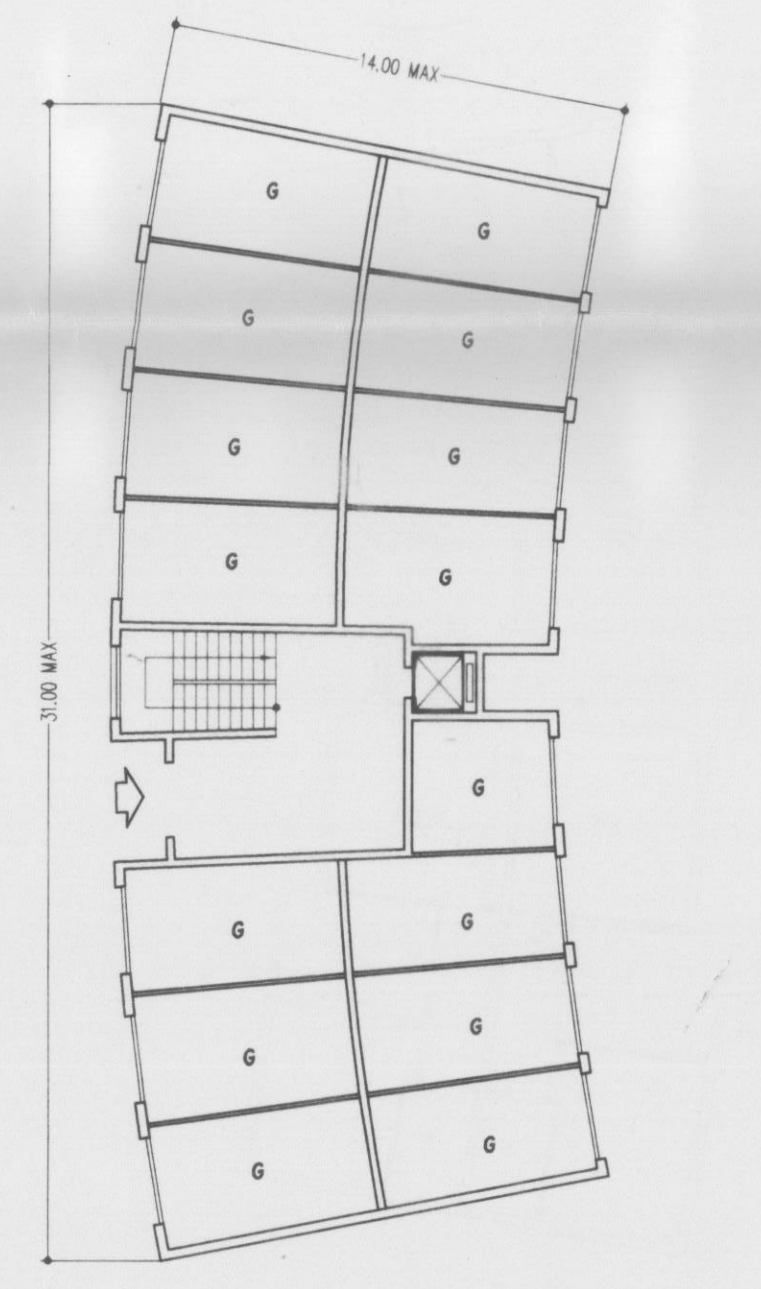
PIANO 1-2-3-4-5



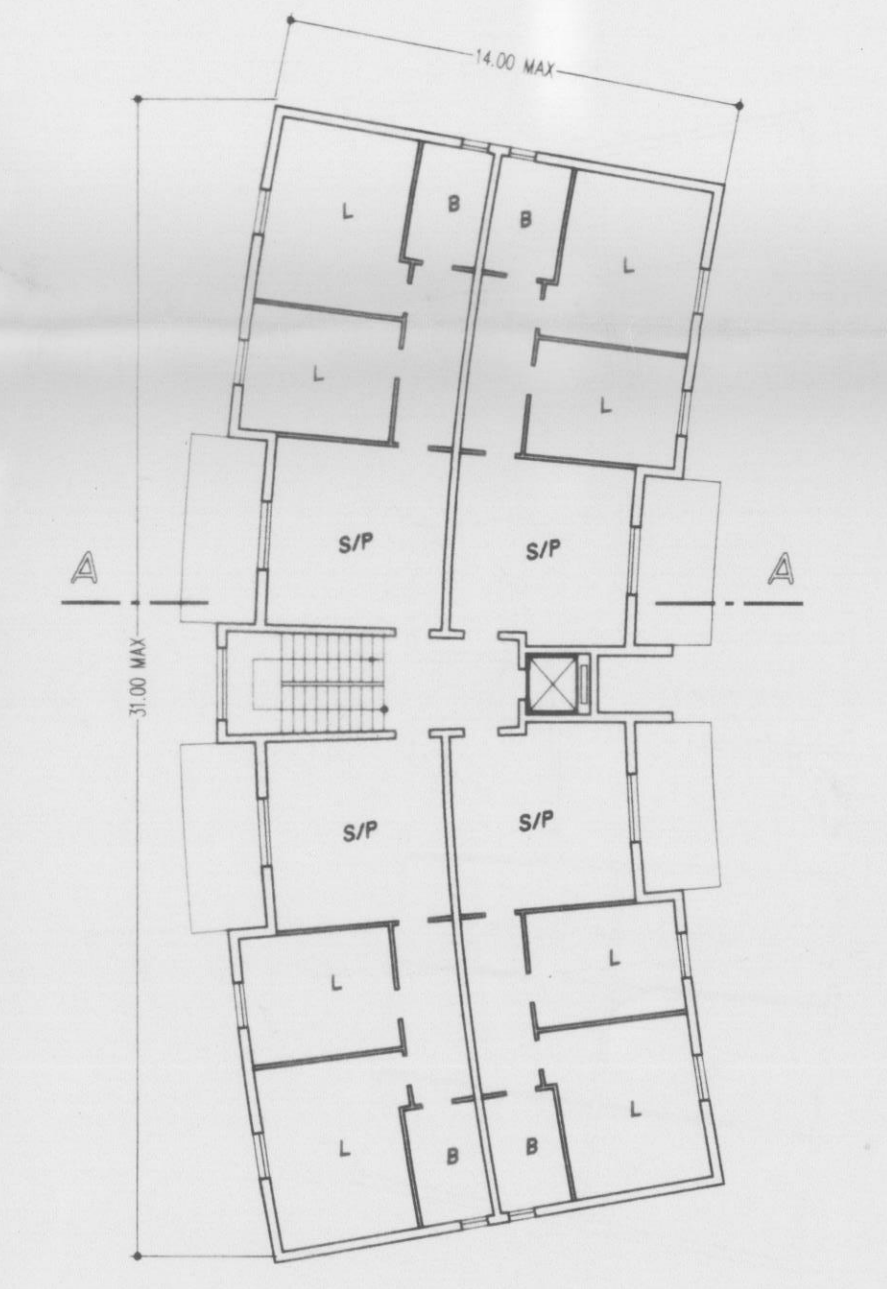
SEZIONE A-A

TIPO EDILIZIO 4A-4B

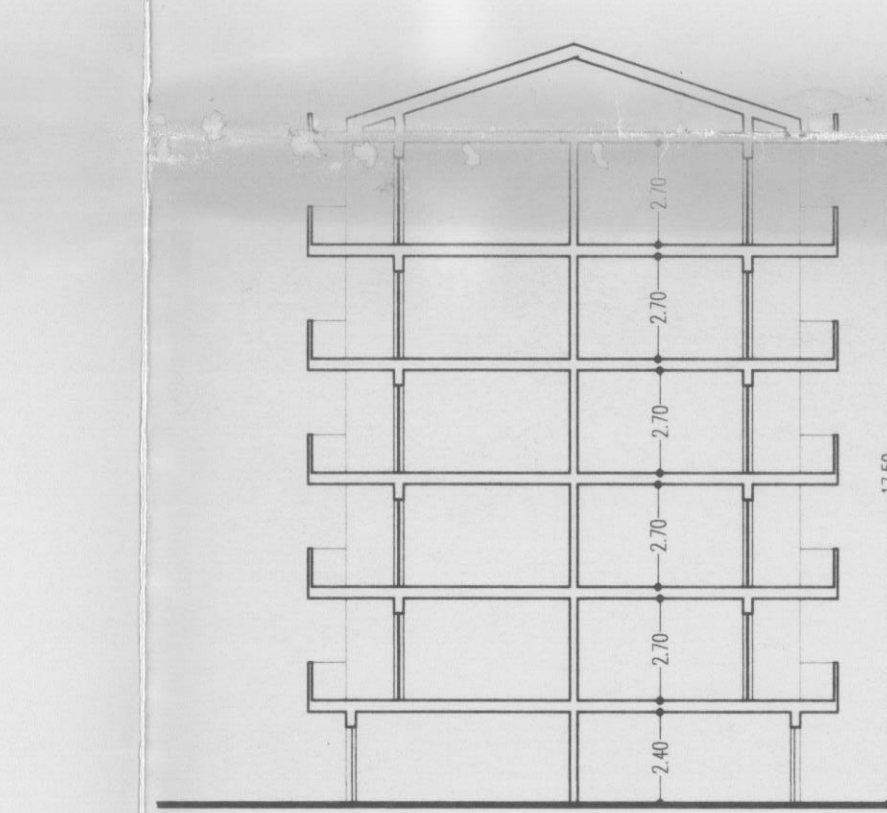
(SCALA 1:200)



PIANO TERRA



PIANO 1-2-3-4-5



SEZIONE A-A