

PIANO PARTICOLAREGGIATO N° 1

IRINCULAZIONE DEL PROGETTO CON ADEGUAMENTO ALLE INDICAZIONI DELLA R. A. 88/AA.
A SEGUITO DEL N. G. N° 307 DEL 28/03/95 E DELLA DELIBERA DI G.R. N° 840 DEL 21 AGO. 1995.

TAV. 6

SCALA 1:200 - DICEMBRE 1995

TIPOLOGIE COMPARTO VI

ARCH. RONALDO CANALE

UFFICIO TECNICO COMUNALE

COMUNE DI MONTESILVANO

PROGETTO ESAMINATO DALLA
COMMISSIONE COMUNALE EDILIZIA NELLA
SEDUTA DEL 20 APR. 1995
ED ALLEGATO ALLA CONCESSIONE
EDILIZIA N° DEL

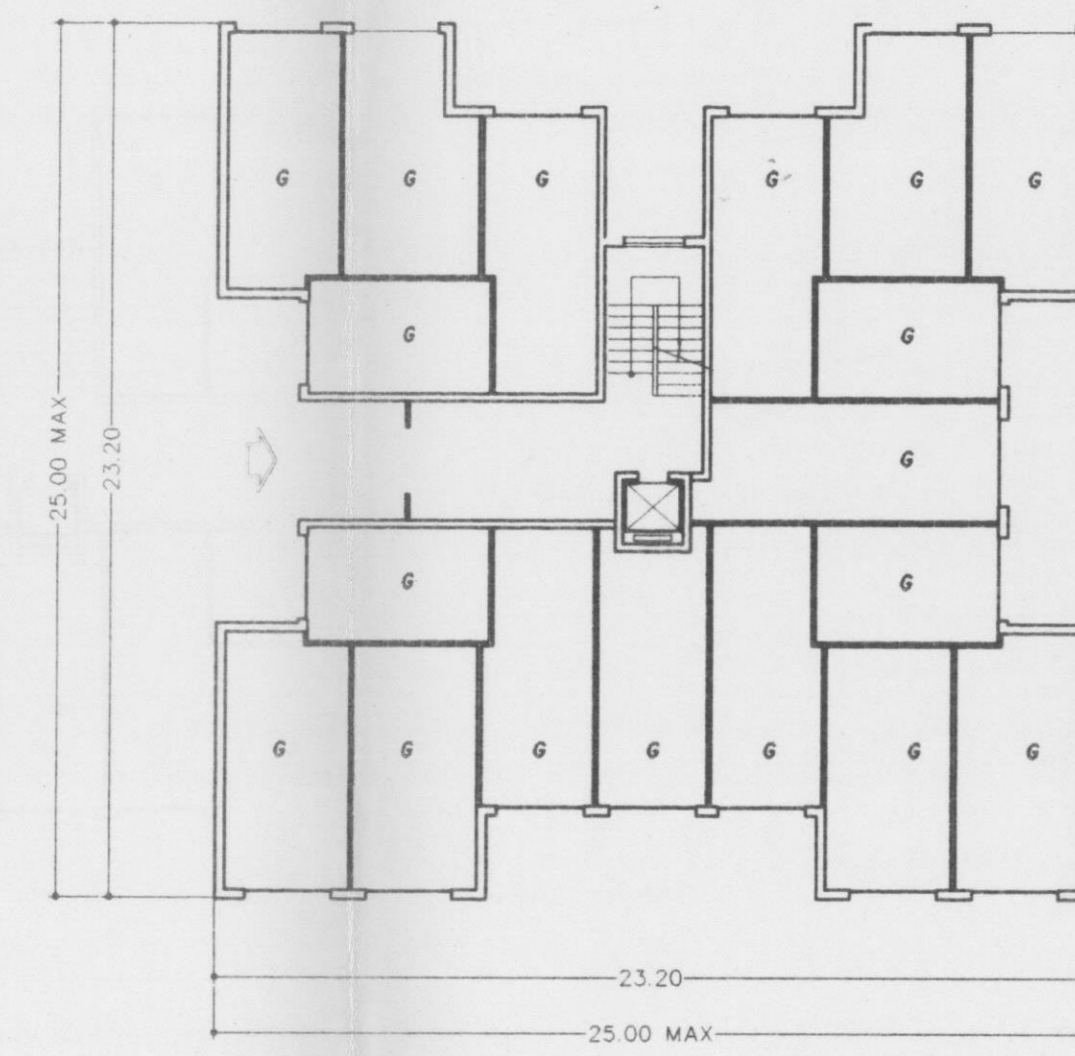
FAVOREVOLE
CON PRESCRIZIONE

UN COMPONENTE
UN COMPONENTE

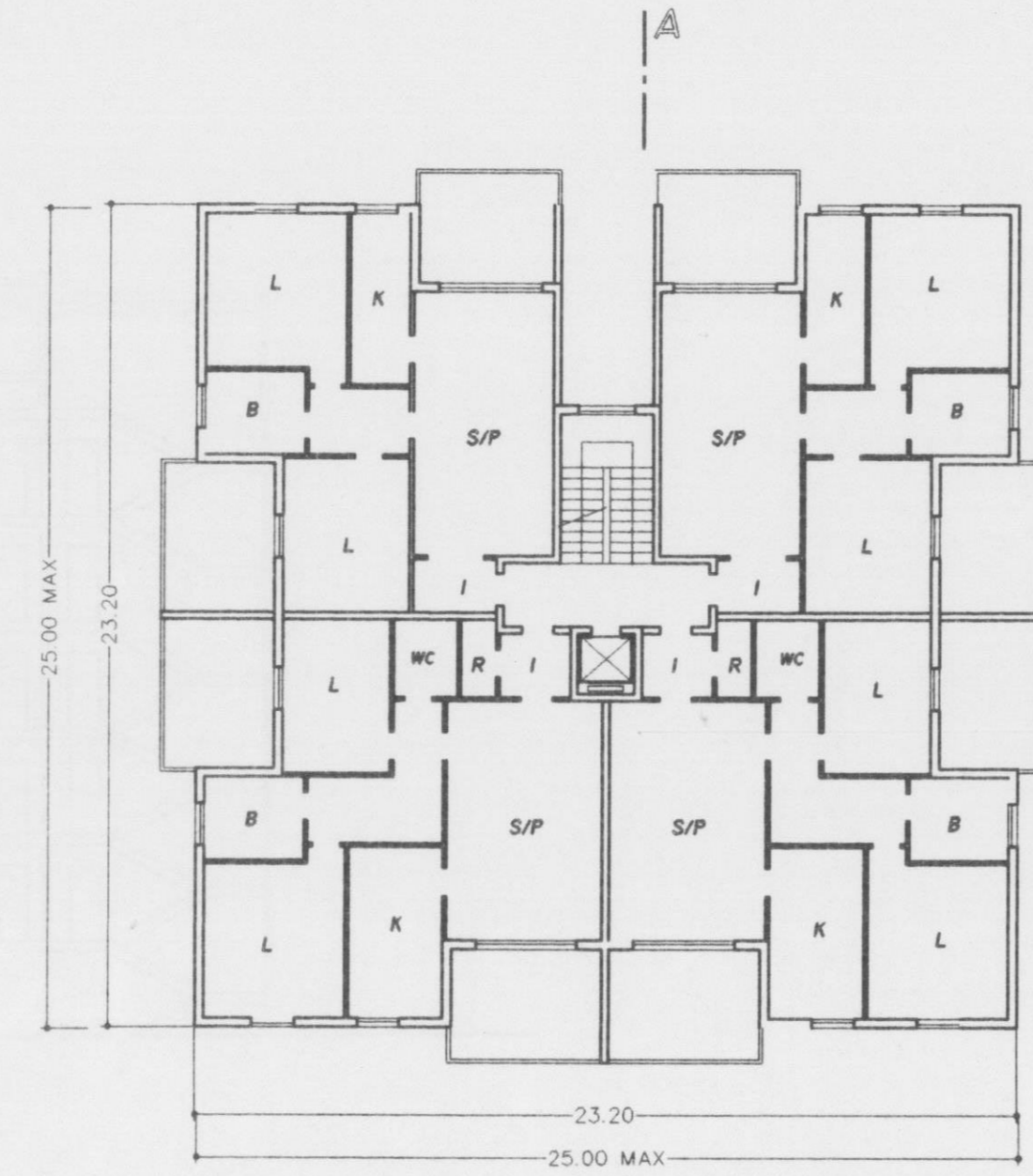
TIPO EDILIZIO 18A-18B-18C-18D-18E-18F-18G-18H-18I

(SCALA 1:200)

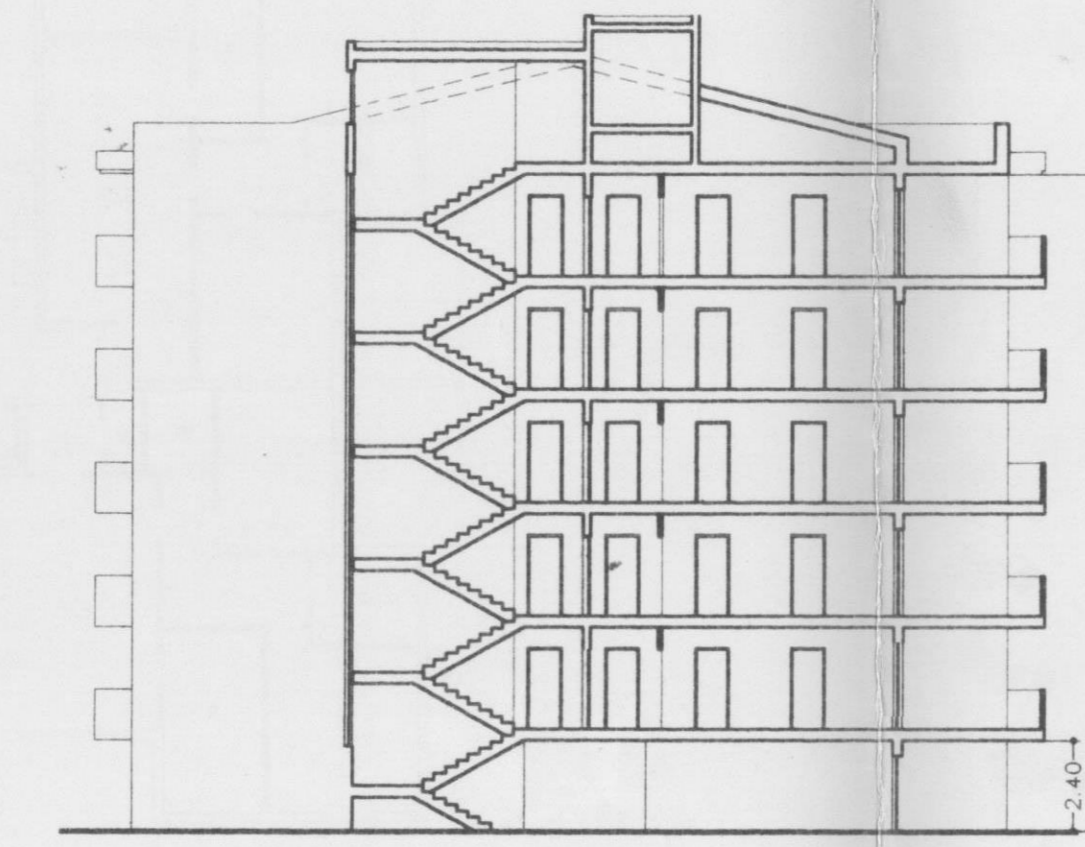
18L-18M-18N-18O-18P-18Q-18R-18S-18T



PIANO TERRA



PIANO 1-2-3-4-5

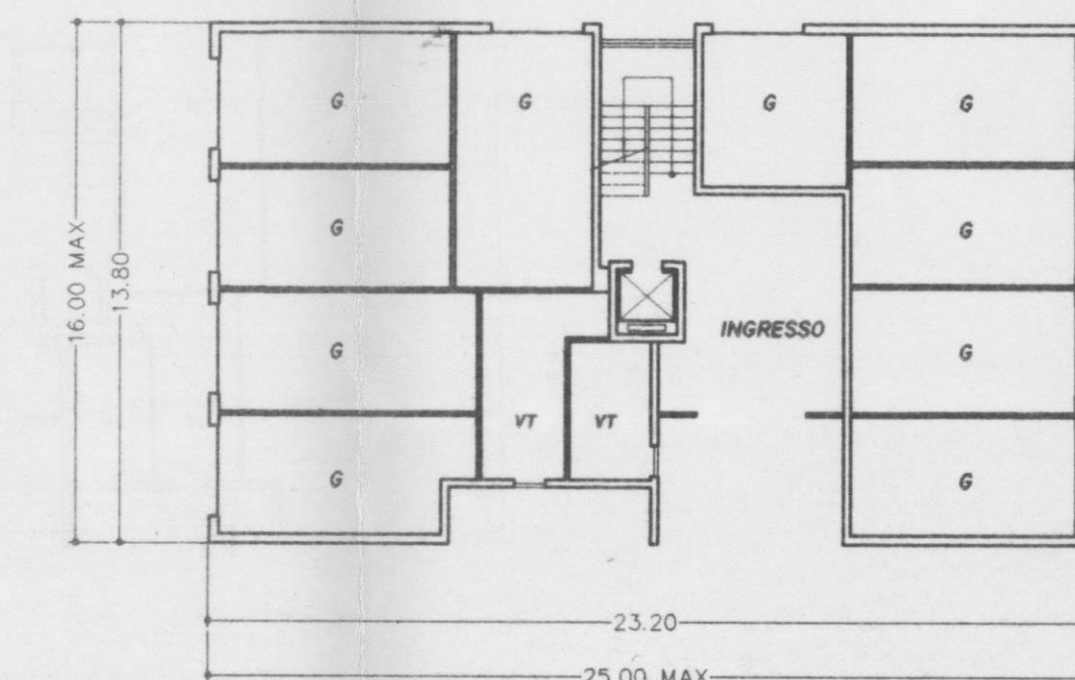


SEZIONE A-A

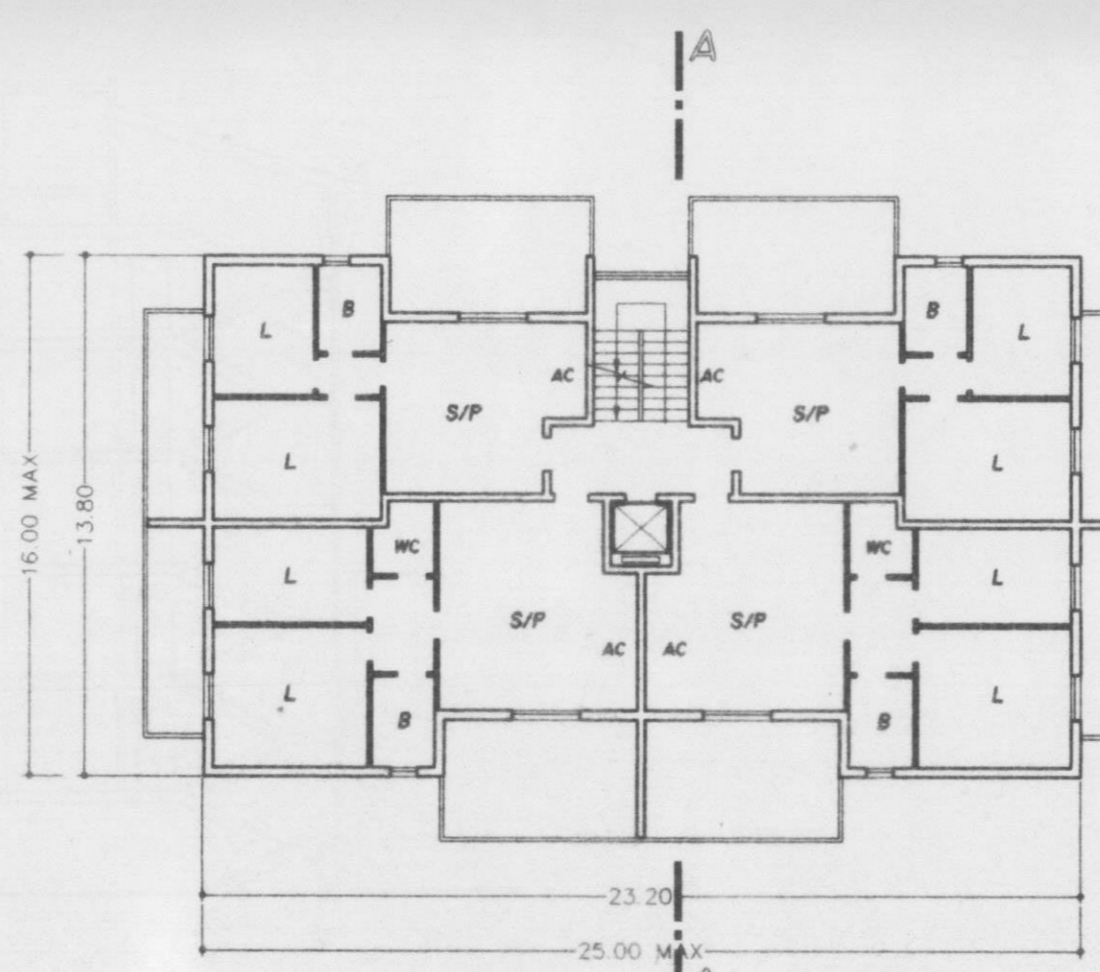
TIPO EDILIZIO 19A-19B-19C-19D-19E

(SCALA 1:200)

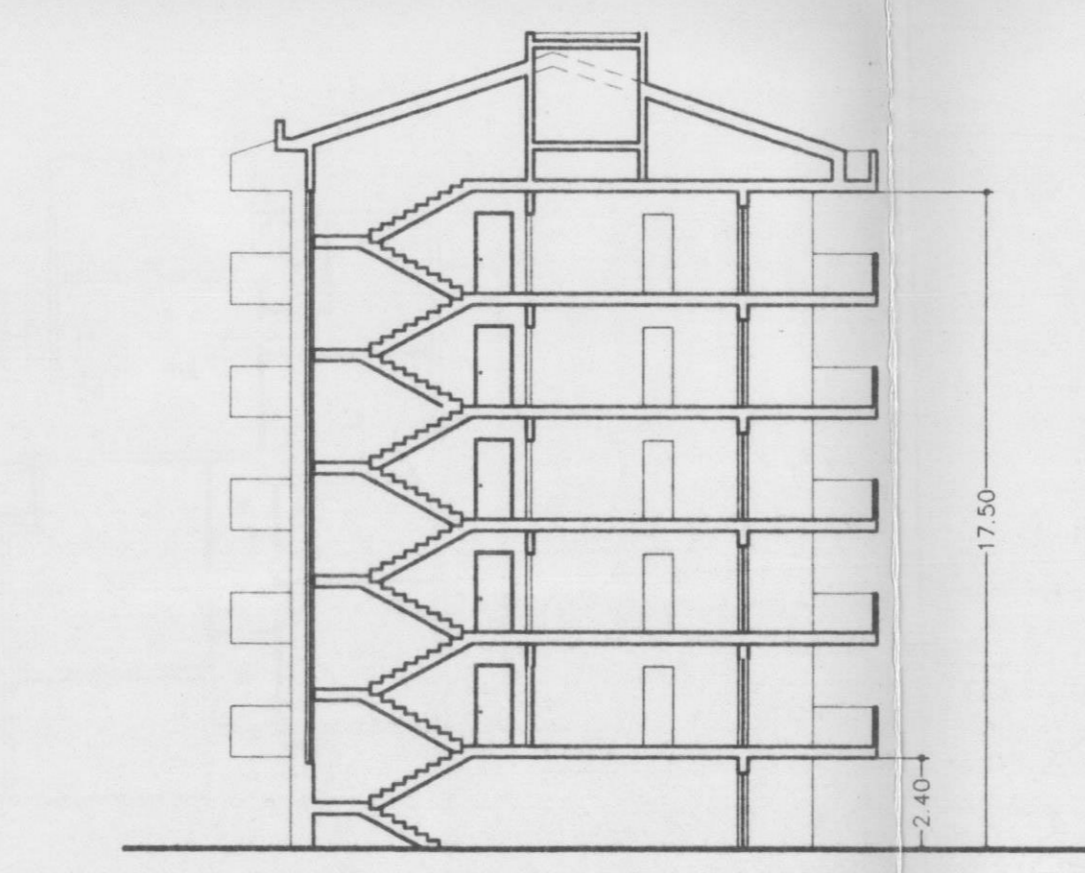
19F-19G-19H-19I-19L



PIANO TERRA



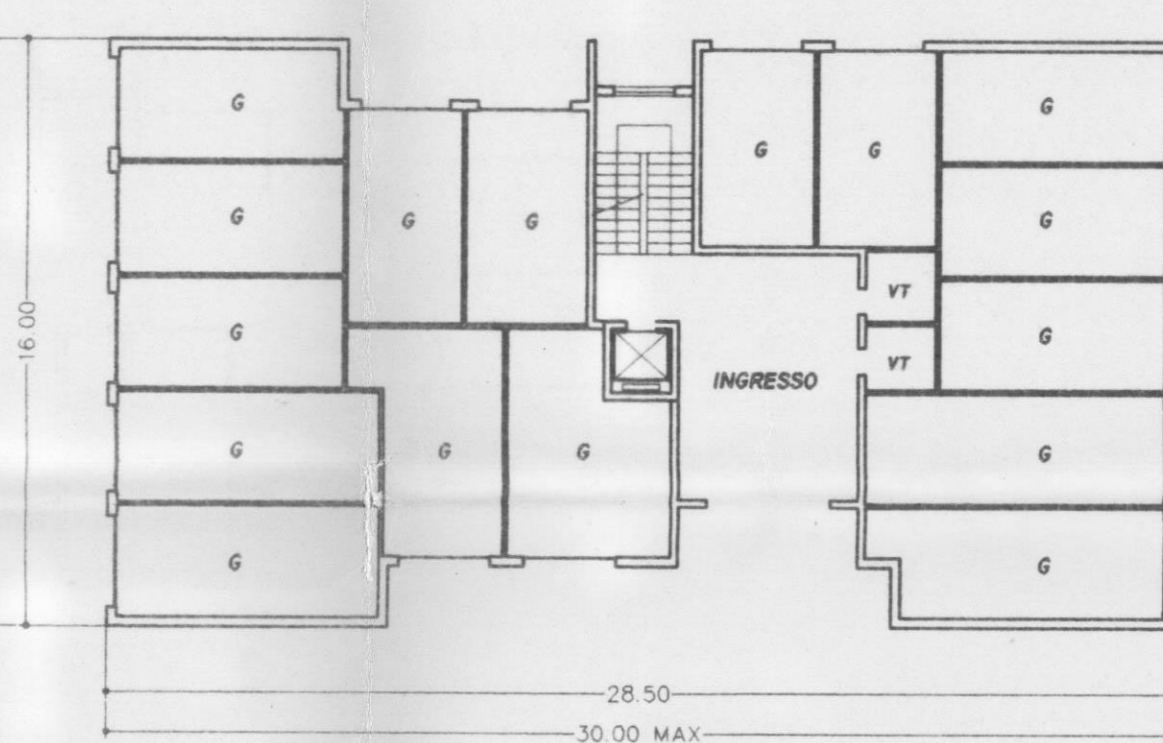
PIANO 1-2-3-4-5



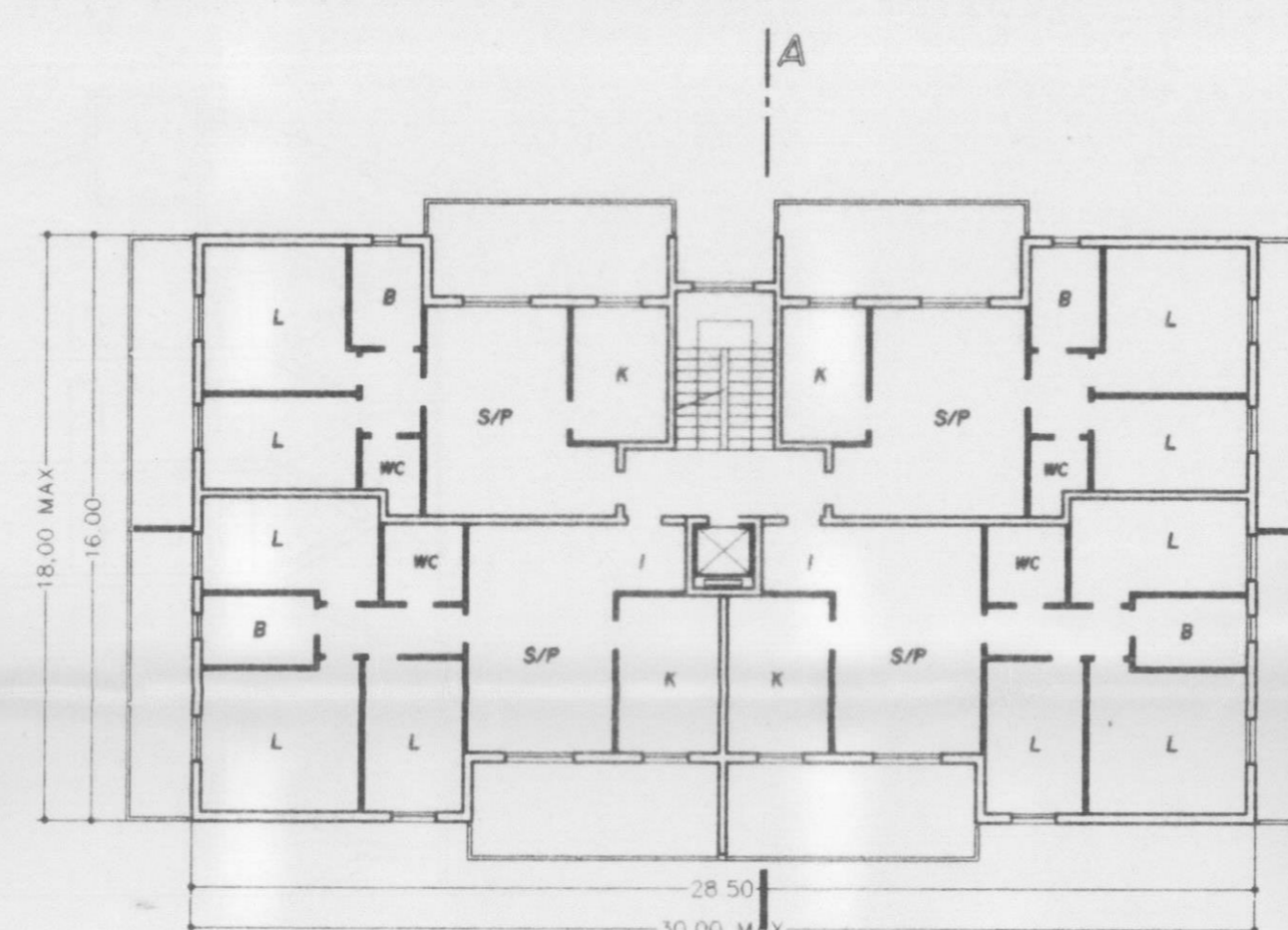
SEZIONE A-A

TIPO EDILIZIO 20A-20B-20C

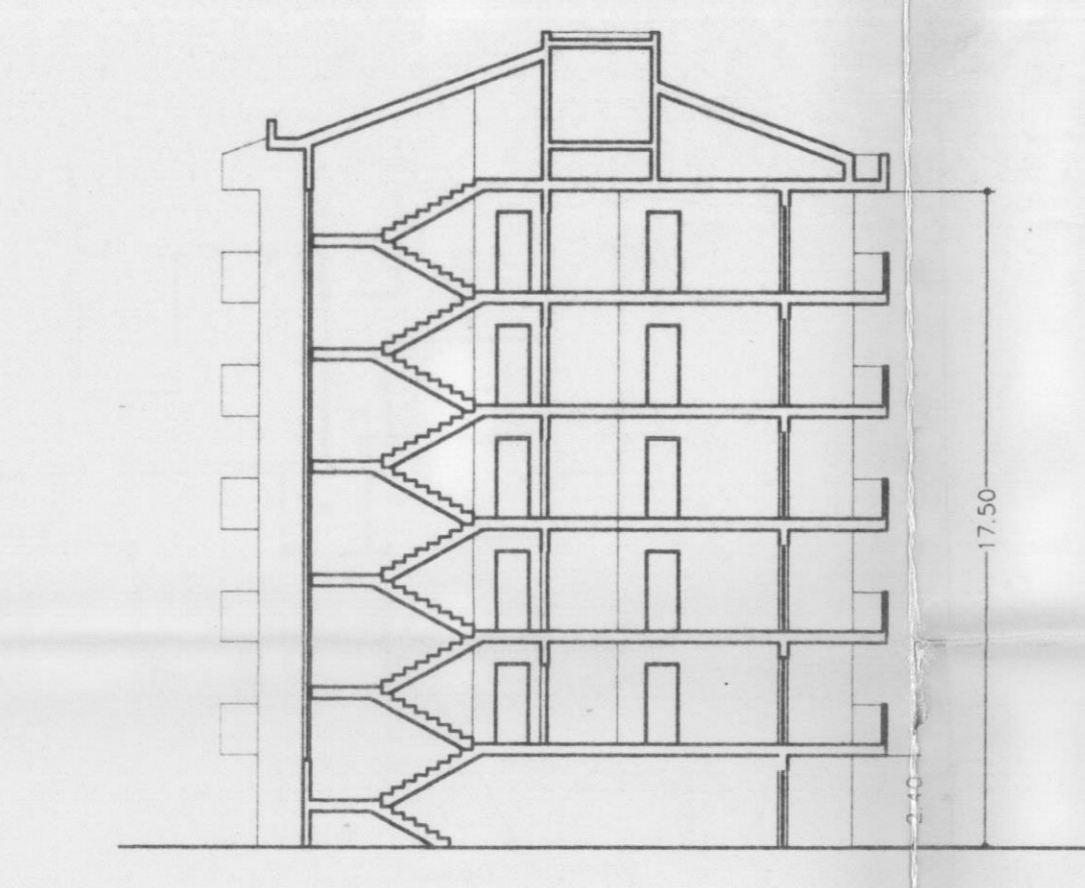
(SCALA 1:200)



PIANO TERRA



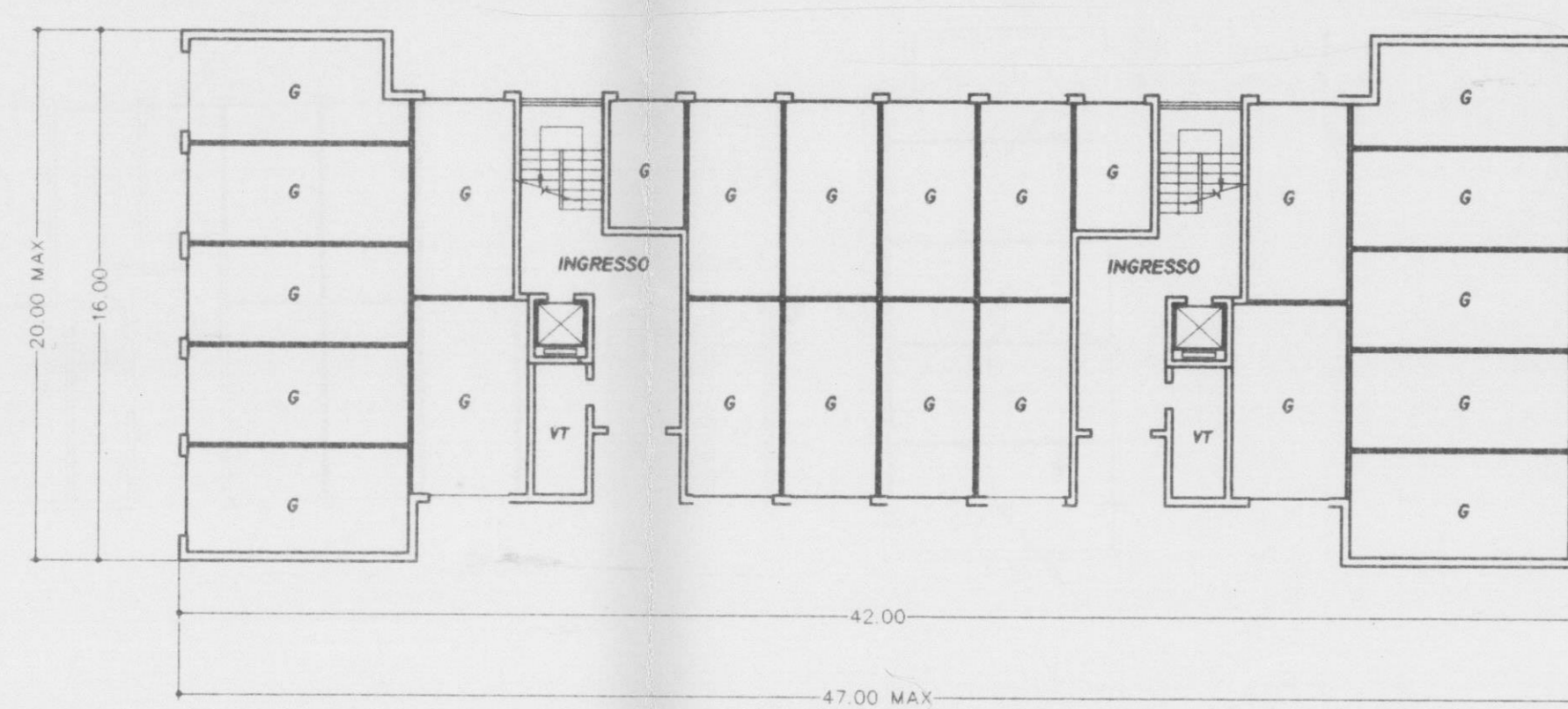
PIANO 1-2-3-4-5



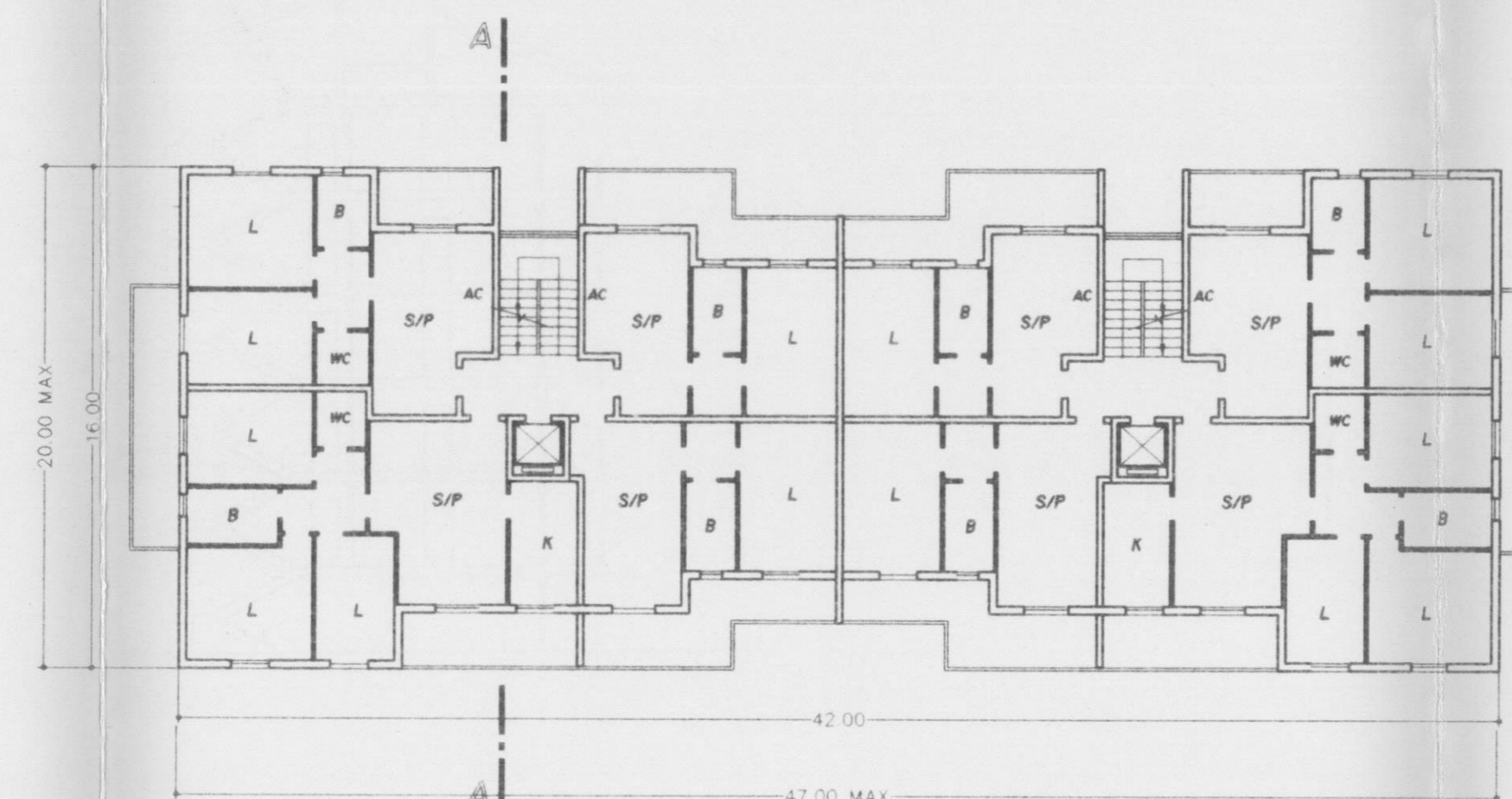
SEZIONE A-A

TIPO EDILIZIO 21A-21B

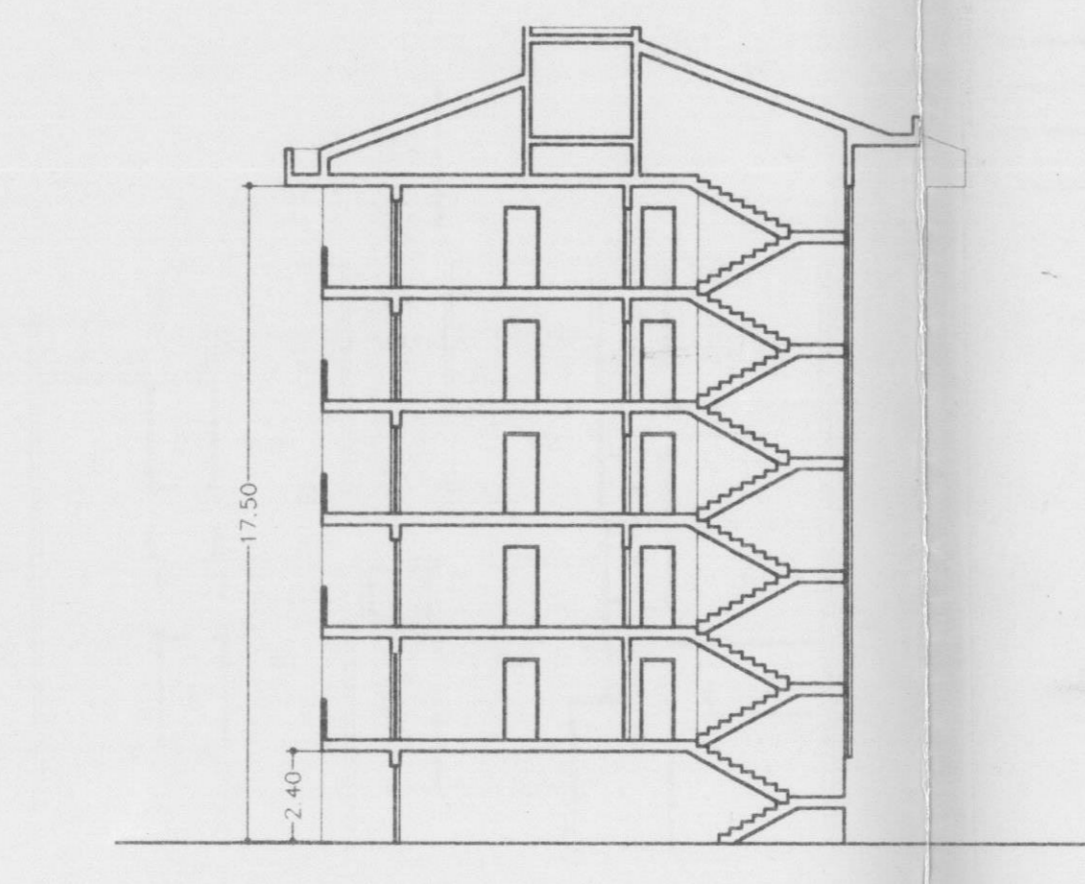
(SCALA 1:200)



PIANO TERRA



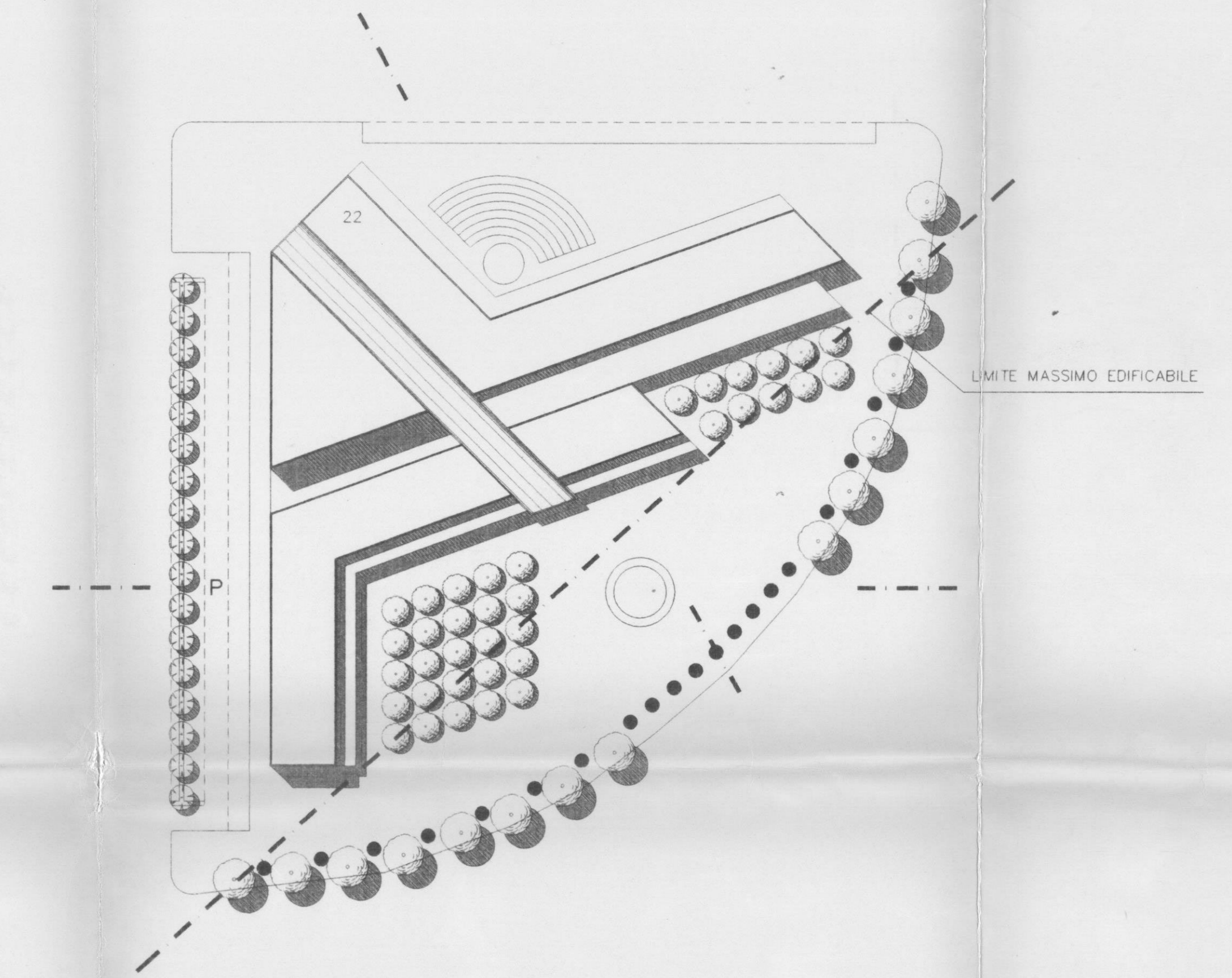
PIANO 1-2-3-4-5



SEZIONE A-A

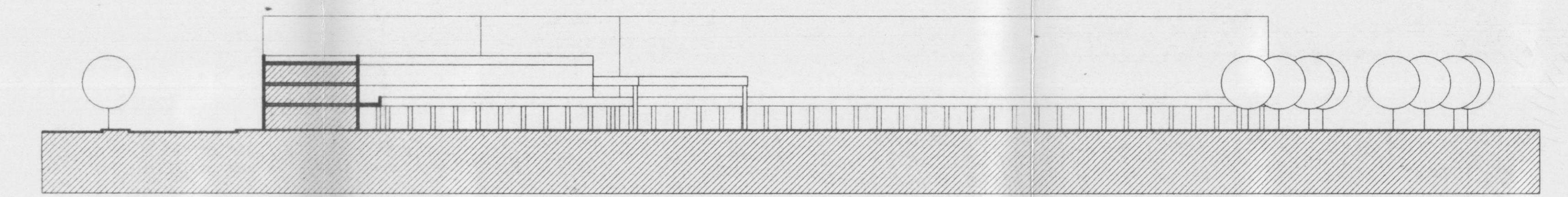
TIPO EDILIZIO 22

(SCALA 1:1000)

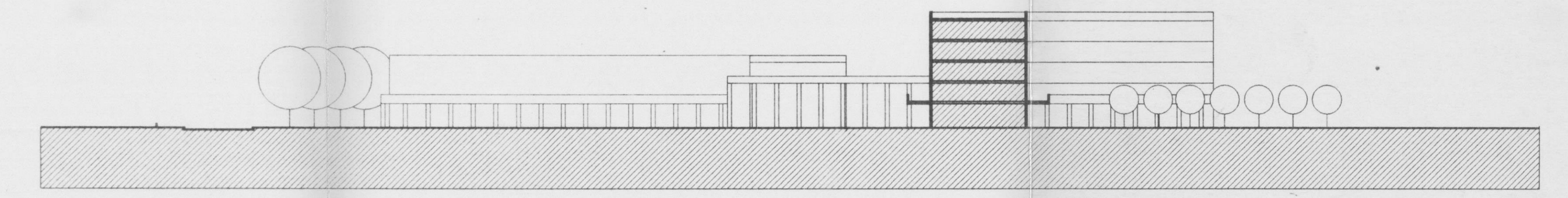


TIPO EDILIZIO 22

(SCALA 1:500)



SEZIONE A-A



SEZIONE A-A

